

LICHEN IN ST JAMES' GRAVEYARD

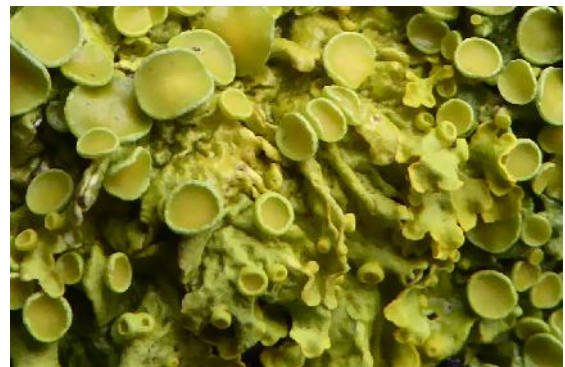
What is lichen?

Lichen are different from plants. They are a combination of at least two simple organisms which grow together. These include algae which produce food for the lichen and fungus which protects it. Lichen like to grow on stone and on trees so the graveyard is a good place to find them.

Lichen are easy to miss if you don't watch out for them but they are worth a close look. There are about 1,700 different kinds of lichen in the UK with varying colours and patterns. Here are some of the lichen to be seen in St James' Graveyard.



Xanthoria parietina. This lichen likes to grow on trees. It's common name is "Sunburst Lichen". If you look at it close up, you can see fascinating shapes and patterns.





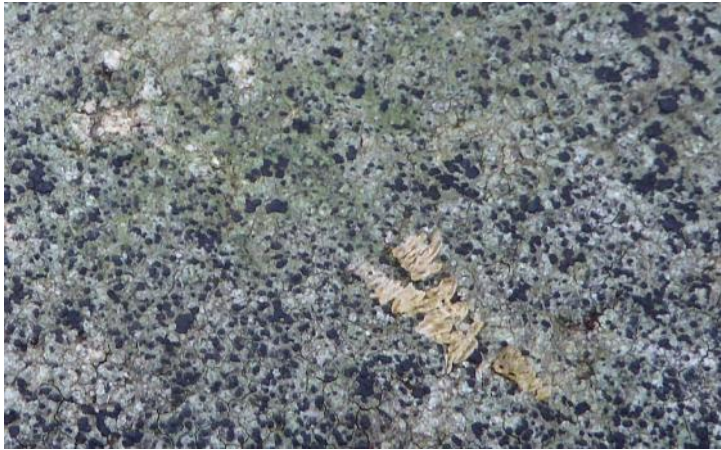
Lecidella elaeocroma. This grows on trees



If you look closely you can see the patterns of spots.



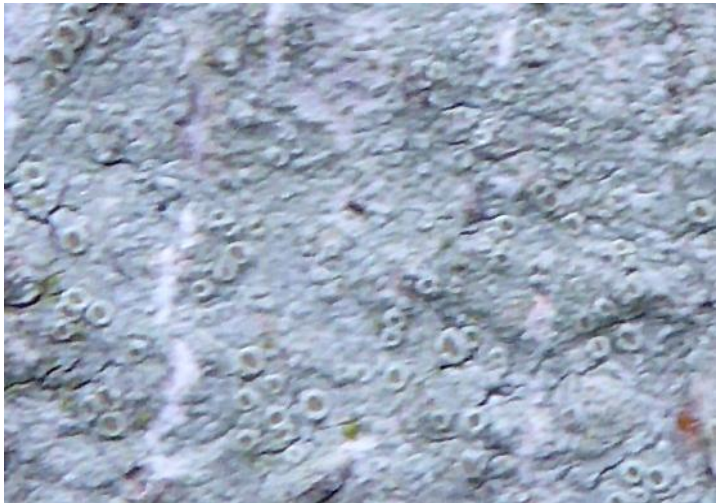
Lecidella stigmatea. This grows on stone.



If you look closely you can see the patterns.



Lecanora albella. This lichen grows on trees.



If you look closely you can see the rings.

Don't forget the Fungi

While you are exploring the graveyard, look out for fungi. A fungus is neither a plant nor an animal. It is what is known as a "kingdom". You can find many fungi in St James' Graveyard. Here are some examples.

